



OFFERS IN THE REGION OF

£475,000

Azenby Road

London, SE15 5AJ

**GARETH
JAMES**

PROPERTY SUMMARY

Tucked just off leafy Lyndhurst Way, Azenby Road is a peaceful enclave in the heart of vibrant Peckham. Overlooking the green expanse of Warwick Gardens, this beautiful two-bedroom ground floor apartment offers a rare blend of tranquillity, convenience, and exclusive amenities—including access to a residents' heated pool.

2



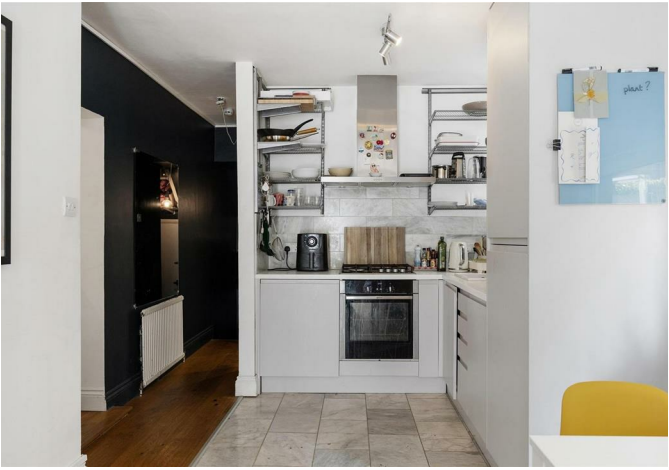
1



1









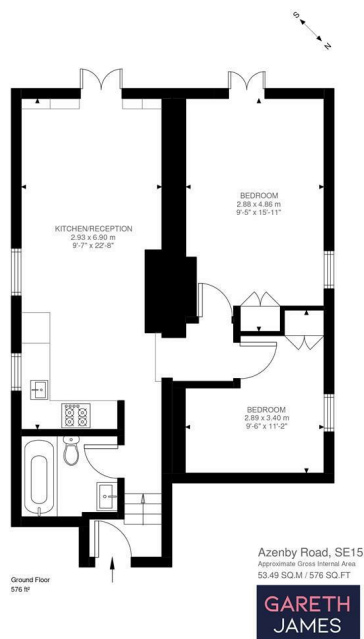
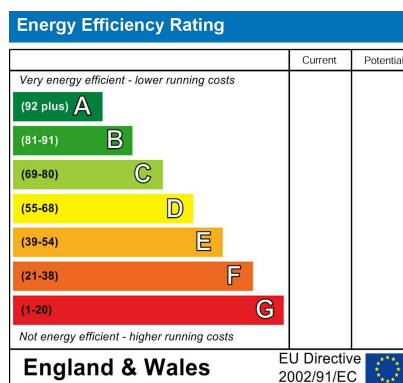


Illustration for identification purposes only. Not to scale.
Floor Plan Drawn According To RICS Guidelines.



Agents Note: Whilst every care has been taken to prepare these particulars, they are for guidance purposes only. All measurements are approximate and are for general guidance purposes only and whilst every care has been taken to ensure their accuracy, they should not be relied upon and potential buyers/tenants are advised to recheck the measurements

GARETH JAMES

OFFICE ADDRESS
129 Bellenden Road
London
SE15 4QY

OFFICE DETAILS
02077324330
sales@garethjames.com
<https://www.garethjames.com/>